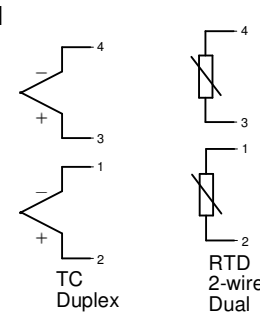
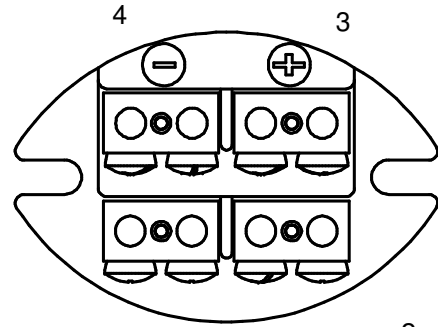
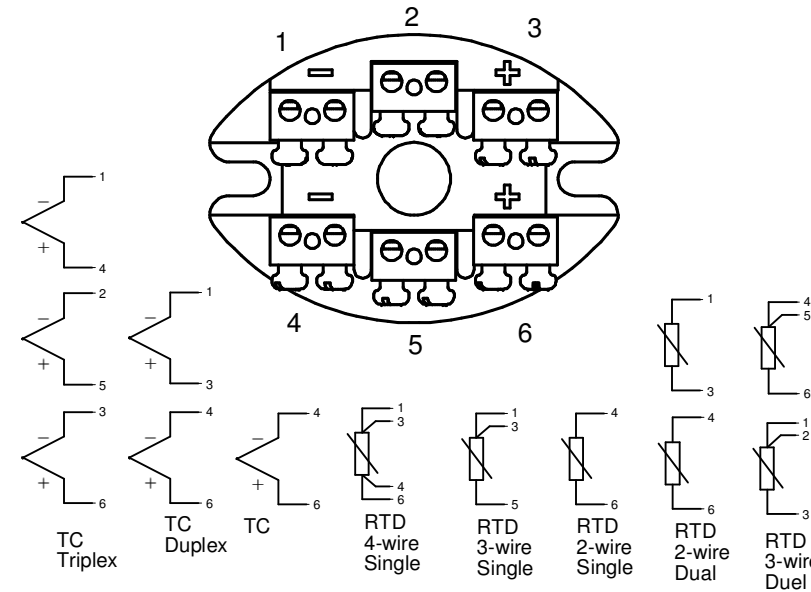


210304
Up to 16 AWG



342
Up to 8 AWG



343			
Part Number	Description	Wire Size	Poles Number Used
343-2	2 Pole Triplex	Up to 12 AWG	1, 3
343-3	3 Pole Triplex	Up to 12 AWG	2, 4, 6
343-4	4 Pole Triplex	Up to 12 AWG	1, 3, 4, 6
343-6	6 Pole Triplex	Up to 12 AWG	1, 2, 3, 4, 5, 6



WARNING - Explosion Hazard. Do not connect or disconnect this equipment unless power has been removed or the area is known to be nonhazardous.
WARNING - Explosion Hazard. Substitution of components may impair suitability for Class I, Division 2.

Installation Notes

- The equipment (or apparatus) must be installed in accordance with manufacturer's instructions.
- The installation must be in accordance with the National Electrical Code and shall be installed in compliance with the enclosure, mounting, spacing, and segregation requirements of the ultimate application.
- Wiring to or from this device, which enters or leaves the system enclosure, must utilize wiring methods suitable for Class I Division 2 Hazardous Locations, as appropriate for the installation.
- This equipment is suitable for installation in Class I, Division 2, Group A, B, C, D hazardous locations or non-hazardous locations only.
- Threaded joints cannot be repaired.
- Cover must be securely tightened before use (e.g. using pin spanner or strap wrench)



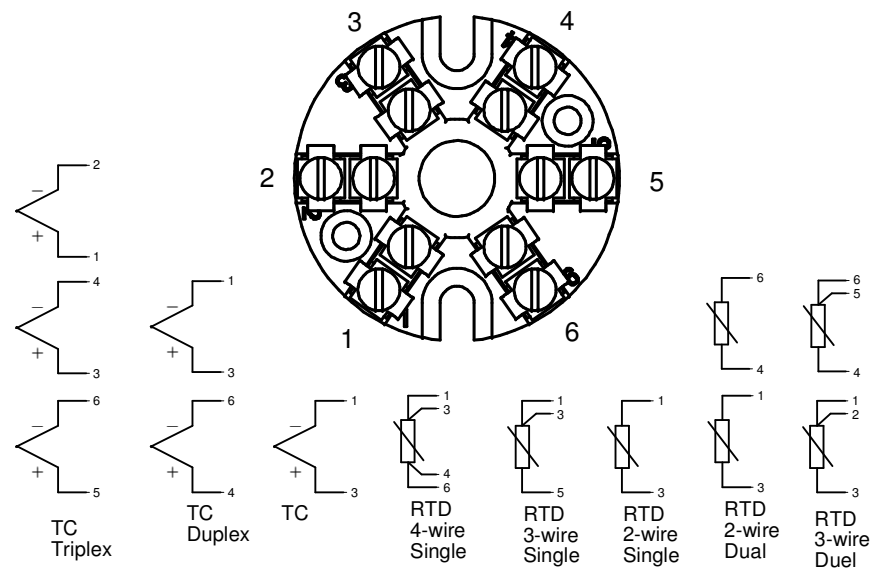
- FM Cert FM19US0115X
- Enclosure supplied with a transmitter, see supplied transmitter instructions and installation drawing.
 - Enclosure supplied with terminal block - terminal blocks are for the connection of simple apparatus RTD or Thermocouple sensors. See adjacent wiring diagrams.

Class I Division 2 Group A, B, C, D; T6
Class II Division 2 Group F, G; Class III; T6
Type 4X, IP66
Ta: -40 to +50°C
Voltage: 30 Vdc; Current: 0-20 mA

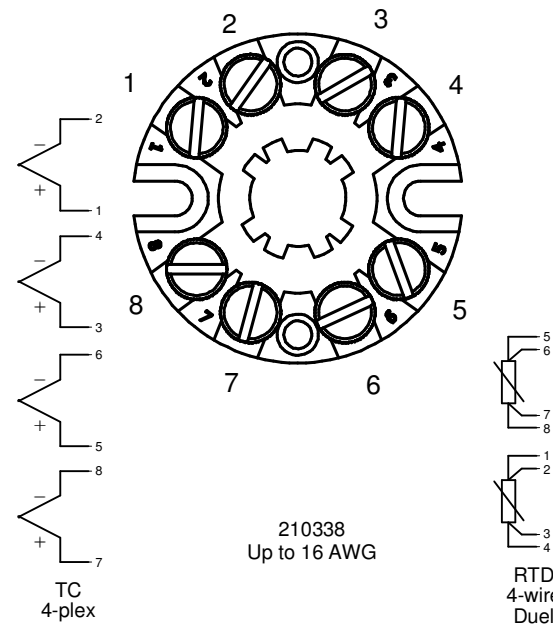


- FM Cert FM20US0133U:
- Empty enclosure (no terminal block, no transmitter) the enclosure must only be used as a pass-through device or wire connections as allowed by the National Electric Code for simple apparatus (RTD or Thermocouple) wiring. When installed for other uses, the final installation/application must be approved or certified.

Type 4X, IP66
Ta: -40 to +50°C
Voltage: 30 Vdc; Current: 0-20 mA



21033X			
Part Number	Description	Wire Size	Pole Number Used
210332	2 Pole	Up to 16 AWG	1, 3
210333	3 Pole	Up to 16 AWG	1, 3, 5
210334	4 Pole	Up to 16 AWG	1, 3, 4, 6
210336	6 Pole	Up to 16 AWG	1, 2, 3, 4, 5, 6



210338
Up to 16 AWG

C	UPDATE FM CERT, ADD CERT #s, CERT FOR EMPTY, CERT W/ INT. DEVICES MOVED VIEW LOCATIONS	JRC	11/16/2020
B	REMOVE 341 TERMINAL BLOCK	JRC	5/21/2019
A	ADDED IP66 CERTIFICATION, 210338 BLOCK, AND CORRECTED TEXT	JAS	11/7/2013
REV	DESCRIPTION	BY	DATE

SPEC NO:		FOR: PYROMATION, INC.	
TOLERANCES		TITLE: TERMINAL BLOCK INSTALLATION INSTRUCTIONS	
SIZE: B	DWG. NO. & SHEET NO: S019701	REV. C	
DRAWN BY: J. SCHRADER		DATE: 6/6/2011	
FRACTION DIM = DECIMAL DIM .XX = DECIMAL DIM .XXX = ANGULAR DIM =		 beyond measure FORT WAYNE, INDIANA 260-484-2580	
This document is PROPRIETARY to Pyromation, Inc.			