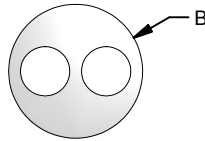
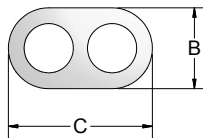
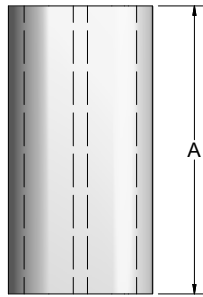


### BARE WIRE, INSULATORS, TERMINAL and SPADE LUGS

#### Bare Base Metal Thermocouple Wire

CODE	TYPE / POL.	MATERIAL	GA.	FT. / LB.
JP08B	J (+)	Iron	8	23
JN08B	J (-)	Constantan	8	20
JP14B	J (+)	Iron	14	91
JN14B	J (-)	Constantan	14	80
JP20B	J (+)	Iron	20	365
JN20B	J (-)	Constantan	20	323
KP08B	K (+)	Chromel®	8	21
KN08B	K (-)	Alumel®	8	21
KP14B	K (+)	Chromel®	14	83
KN14B	K (-)	Alumel®	14	83
KP20B	K (+)	Chromel®	20	333
KN20B	K (-)	Alumel®	20	333

#### INSULATOR DIMENSIONS



#### Cordierite Insulators (2250 °F max)

CODE	STYLE	GA.	A DIM. (inches)	B DIM. (inches)	C DIM. (inches)	NO BORE(S)
408-1C	Oval	8	1	0.281	0.500	2
408-1R	Round	8	1	0.465		2
408-3C	Oval	8	3	0.281	0.500	2
408-3R	Round	8	3	0.465		2
408-12S <sup>[1]</sup>	Fish spine	8	12	0.260		1
411-1C	Oval	11	1	0.218	0.375	2
411-3C	Oval	11	3	0.218	0.375	2
414-1C	Oval	14	1	0.188	0.313	2
414-1R	Round	14	1	0.250		2
414-3C	Oval	14	3	0.188	0.313	2
414-12S <sup>[1]</sup>	Fish spine	14	12	0.200		1
420-1C	Oval	20	1	0.188	0.172	2

[1] 12S fish spine insulators supplied in continuous 12" sleeves.

#### Bare Noble Metal Thermocouple Wire

CODE	TYPE / POL.	MATERIAL	GA.	IN. / TROY OZ.
RP24B	R (+)	Plat. 13% Rh	24	309
SP24B	S (+)	Plat. 10% Rh	24	302
PN24B	R S (-)	Pure Platinum	24	282
RP26B	R (+)	Plat. 13% Rh	26	482
SP26B	S (+)	Plat. 10% Rh	26	473
PN26B	R S (-)	Pure Platinum	26	440

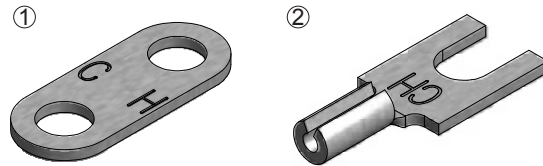
NOTES: All wire supplied bright annealed. Wire orders must be for equal amounts of both legs. All listed wire is supplied as standard limits of error.

#### Alumina Insulators (3400 °F max)

CODE	STYLE	GA.	A DIM. (inches)	B DIM. (inches)	C DIM. (inches)	NO BORE(S)
424-12	Round	24	12	0.188		4
424-18	Round	24	18	0.188		4
424-24	Round	24	24	0.188		4
424-30	Round	24	30	0.188		4

#### Thermocouple Alloy Terminal and Spade Lugs

TERMINAL LUG CODE <sup>[1]</sup>	SPADE LUG CODE <sup>[2]</sup>	ANSI LETTER DESIGNATION	THERMOCOUPLE ALLOY
460053	460060	KP, EP	Chromel®
460052	460059	KN	Alumel®
460056	460063	JP	Iron
460054	460061	JN, EN, TN	Constantan
460055	460062	TP, RP, SP	Copper
460051	460116	RN, SN	Alloy #11



[1] Terminal lugs fit Cinch Jones Series #141 and equivalent Barrier terminal blocks with 27/64" screw spacing and #6-32 terminal screws.

[2] Spade lugs are crimp-on style to fit #6-32 terminal screws and 18 awg. wire or smaller.

## COMPLETE COMPENSATED TERMINAL BLOCKS

EXAMPLE ORDER NUMBER:

**26 - 240 - 08**

#### Terminal Block Thermocouple Type

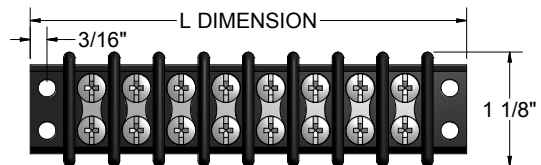
PREFIX CODE	T/C TYPE	THERMOCOUPLE ALLOY	
		POSITIVE	NEGATIVE
26 - 220	E	Chromel®	Constantan
26 - 230	J	Iron	Constantan
26 - 240	K	Chromel®	Alumel®
26 - 250	R-S	Copper	Alloy #11
26 - 260	T	Copper	Constantan
26 - 270	U	Copper	Copper

Consult factory for combination blocks.

#### Number of Circuits

SUFFIX CODE	CIRCUITS (TERMINALS)	L DIMENSION (inches)
02	2 (4)	2 1/2
04	4 (8)	4 1/2
05	5 (10)	5 3/8
06	6 (12)	6
08	8 (16)	7 3/4
10	10 (20)	9 1/2

Consult factory for other number of circuits.



Chromel® and Alumel® are registered trademarks of Hoskins Manufacturing Company.

